



QUICK MIGRATION GUIDE

Transitioning from
LE-TRA to SAP TM

NAV//IT
CONSULTING

Table of Contents

01

Executive Summary

02

**Architecture and
deployment options**

03

**Migration Options
Explained**

04

**Options to Choose
From**

05

**Benefits of
SAP TM
versus LE TRA**

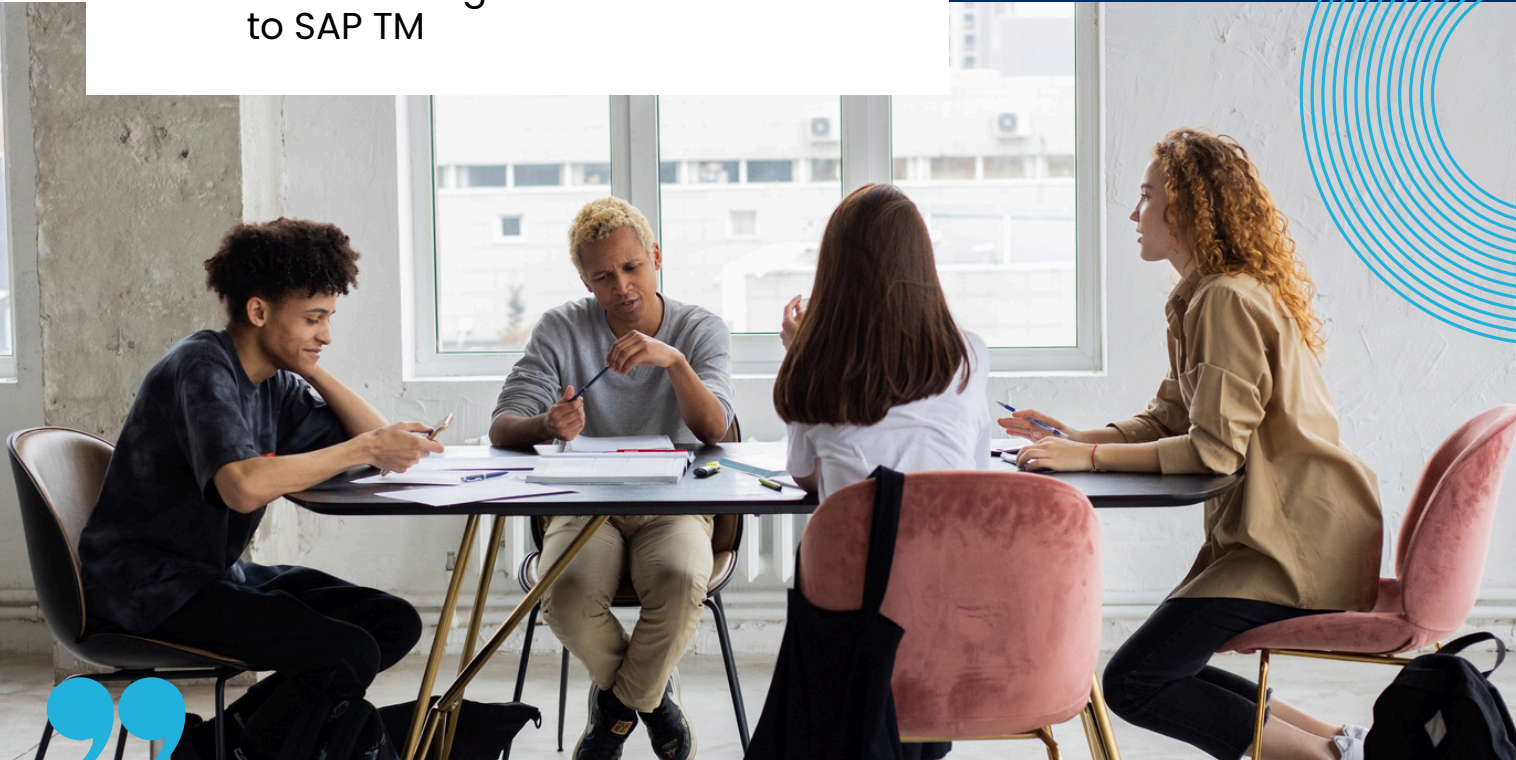
06

Our Offerings



EXECUTIVE SUMMARY

Transitioning from LE-TRA
to SAP TM



In a globally connected world customers now have the advantage of ordering anything with a single click, our supply chains are working harder than ever. But they are also facing a "new normal" of geopolitical shifts and environmental unpredictability that the old rules didn't account for.

Despite this, many companies are still steering through this advanced landscape using SAP LE-TRA—a system built on 30-year-old architecture from a time when the world felt much smaller and more predictable.

As SAP LE-TRA nears its sunset, we shouldn't see it as just another IT deadline. Instead, it's a chance to trade in "how we've always done it" for a more resilient way of working.

Moving to a future-proof Transportation Management (TM) system isn't just a technical upgrade; it's about giving your team the tools to stay agile in a volatile market. By planning this migration now, you aren't just keeping the lights on—you're ensuring your business is built to thrive for decades to come.

So, why migrate now?



01

Hard Deadlines:

Mainstream maintenance for ECC ends in 2027. The "compatibility scope" allowing LE-TRA to run on S/4HANA expires strictly in 2030. Let this shift not catch you off guard. Prepare in advance to use this transition as an opportunity to move in the direction most suitable for your business needs.

02

Resource Scarcity

As thousands of customers rush to migrate before the deadline, demand for skilled TM consultants will surge. This sudden spike will make experienced consultants increasingly scarce, driving up costs, extending project timelines, and creating significant resource bottlenecks for late movers.

03

Strategic Upgrade:

Moving from LE-TRA to TM is not just a system change — it's a strategic upgrade. It shifts you from siloed processes to an integrated supply chain with stronger collaboration across external partners. SAP TM also simplifies the landscape by replacing multiple custom Z-codes with standard configurations and flexible BRF+ rules.

Architecture and Deployment Options:

You have four realistic paths to transition from LE TRA



- Continue using LE-TRA until 2030, but start planning now.

- Move to Basic TM embedded in S/4HANA

- Move to Advanced SAP TM (embedded or standalone),

- Replace LE-TRA with SAP TM Public Cloud





Embedded TM:

Sidecar (Side-by-Side) TM:

- A separate TM instance connected to one or multiple ERPs.
- Best for: High-volume scenarios, performance-critical 24/7 operations, or companies managing multiple disparate ERPs.



Volume-Based Fit

Multiple ERP's:

- ERP instances which are not yet converted to S/4HANA must be integrated to SAP Transportation Management as part of S/4HANA.
- There are multiple S/4HANA instances in a system landscape which must be integrated to SAP Transportation Management as part of S/4HANA.
- In this case option #2 (side-by-side) is advised.)

Embedded TM:

- Runs directly inside the S/4HANA core.
- Best for: Most shippers. Eliminates data redundancy (one Business Partner, one Material Master) and removes the need for OTR/DTR (Order/Delivery Transfer Requests) documents.



Sidecar (Side-by-Side) TM:

- In case volumes are low/medium, option #1 (embedded) can be chosen.
- For High volume driven distribution, option #2 (side-by-side) will be more suited.



Multiple ERP's:

LICENSING TIERS



Basic TM:

Acts as the direct functional replacement for LE-TRA, enabling core transportation processes such as manual freight planning, execution, and output/document management. It supports day-to-day shipment handling with limited optimization and is typically bundled within the S/4HANA Enterprise Management license, making it suitable for straightforward logistics scenarios.

Advanced TM:

Designed for complex and high-volume transportation networks, it enables automated VSR optimization, strategic freight procurement, and advanced planning capabilities. It supports sophisticated consolidation, carrier selection, and cost optimization, making it ideal for organizations seeking efficiency gains, scalability, and data-driven transportation decisions.

The right choice depends on:



Your functional gaps vs. LE-TRA



Your S/4HANA migration timeline



Whether you want an all-in-one S/4 landscape or a dedicated transportation system



Your Migration Options Explained



Continue Running LE-TRA (Short to Medium Term)

You may continue using LE-TRA in ECC or S/4HANA under SAP's compatibility/extended-use agreements.

However, this is a bridge strategy only—SAP has defined end-of-maintenance dates. Use this time to assess your future TM architecture.



SAP Basic Transportation Management ("Basic TM")

Embedded in S/4HANA

Basic TM is included with S/4HANA and covers the core LE-TRA footprint for standard road transportation.

Best for: Companies with relatively simple, LE-TRA-like processes.

Characteristics:

- No additional license
- Supports basic planning, execution, and settlement
- Strong S/4-native integration
- Migration is typically a re-implementation, as data models are new
- Right fit if you want a cost-neutral move with modernized S/4 processes





SAP Transportation Management

Advanced (Full) TM

The full TM solution for organizations with complex transportation networks.

Deployment options:

- Embedded in S/4HANA: best for tight process integration with minimal interfaces
- Standalone/side-car: suitable for multi-ERP or global logistics hubs

Designed for:

- Multi-leg and multimodal planning
- Complex rate structures and charge management
- Global freight settlement
- Freight forwarding, carrier collaboration, capacity management
- Optimized routing and load consolidation (VSR optimizers)

Ideal if you have high transportation complexity or want an enterprise-grade TM platform.



Cloud-Based SAP TM

Cloud-based SAP Transportation Management is delivered as a SaaS solution, enabling organizations to manage transportation planning, execution, and monitoring through a secure cloud environment. It supports real-time visibility, intelligent freight optimization, and seamless connectivity across the supply chain without heavy on-premise infrastructure.

Why choose this approach?

- Quick deployment with faster business value
- Lower infrastructure and maintenance efforts
- Scalable to support global and growing operations
- Real-time collaboration across shippers, carriers, and partners
- Easy integration with S/4HANA and other systems via APIs

This model is ideal for businesses aiming for agile, cloud-first logistics with reduced IT complexity and enhanced operational transparency.

Your Options

www.nav-it.com

Choose Basic TM if:

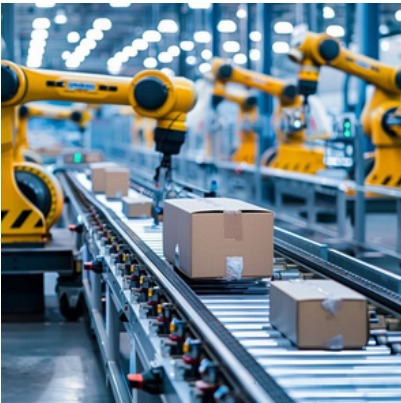
- Your existing LE-TRA footprint is relatively standard
- Cost minimization is important
- Advanced planning and optimization are not required
- You want a straightforward migration during S/4 transformation

Choose Advanced TM if:

- You operate complex, high-volume, global transportation
- You need optimized routing, advanced rating, or multimodal planning
- You want a scalable TM backbone for multiple ERP systems
- Freight forwarding or complex scenarios are part of your business

Choose Cloud-Based SAP TM if:

- Faster implementation and quicker ROI are key priorities
- You aim to reduce on-premise infrastructure and IT overhead
- Your business is expanding and requires flexible logistics capabilities
- You prefer continuous updates and innovation without complex upgrades



Benefits of SAP TM versus LE-TRA



Data-Driven Agility (Embedded Analytics)

The LE-TRA Problem: Reporting in LE-TRA is static or with table dumps. Data needs to be downloaded and then analysed using Excel or other tools. A simple question on average freight spend per carrier, requires data extraction and then working on the data.

The TM Basic Strategic Value:

TM Basic leverages S/4HANA Embedded Analytics.

Strategic Win: In SAP TM , your analysis begins in the FIORI dashboard itself. You can also easily work understand the spend at granular level, like base charges, fuel surcharge, toll etc.



Unifying the Supply Chain (Breaking Silos)

The LE-TRA Problem: In the legacy world, the Warehouse (WM/EWM) and Transportation (LE-TRA) system were speaking different language. 'LETRA' had shipment and EWM 'Transportation Units' which relied on complex interfaces to stay in sync.

The TM Basic Strategic Value: With the Advanced Shipping & Receiving (ASR), Freight order is the single point of truth where the Warehouse and Transportation teams work and updates are done in real-time.

- Strategic Win: Elimination of "black holes" between the warehouse dock and the truck. Any update in the handling unit in EWM is direct updated in Freight Order instantly.

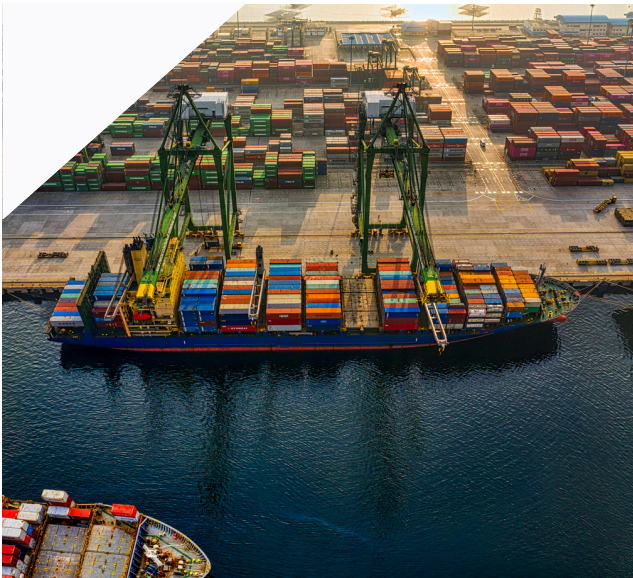


Future-Proof Scalability

The LE-TRA Problem: LE-TRA is a 30-year-old product and not future proof. Making any investments in the same can contribute to technical debt.

The TM Basic Strategic Value: TM Basic runs on the same technical architecture as "Advanced TM".

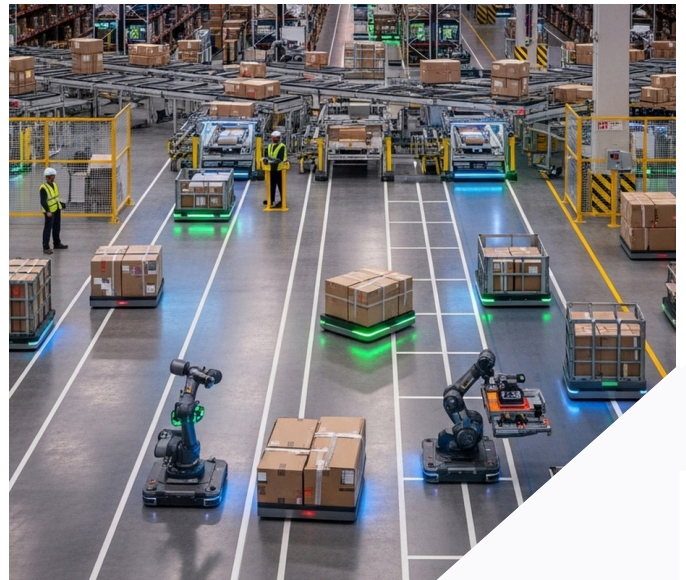
- Strategic Win: You are building on the platform of the future. If your business grows and you suddenly need VSR Optimization or Strategic Freight Procurement (Advanced features), you do not need a whole new implementation project. You just need to buy a new licence and configure the new requirements.



Native Connectivity to the Logistics Ecosystem

The LE-TRA Problem: Connecting to external carriers usually required building custom EDI connections (EDI 204/214) for each partner. This is expensive and brittle. The TM Basic Strategic Value: With BN4L, TM can directly into the SAP Business Network for Logistics (BN4L) and easily collaborate with external partners.

- Strategic Win: You gain "Plug and Play" connectivity. With direct connection with your carrier, you can easily tender loads (even manually in Basic) and receive tracking updates from thousands of carriers who are already on the network, without building individual point-to-point connections.



Land scape Simplification (Clean Core)

The LE-TRA Problem: Over the last 20 years, most companies heavily customized LE-TRA with Z-code to make it work. This makes S/4HANA upgrades painful.

The TM Basic Strategic Value: TM Basic is feature-rich enough to replace most custom LE-TRA developments with standard configuration or flexible BRF+ rules (e.g., for printing output).

- Strategic Win: A "Clean Core." You reduce your custom code footprint, making future S/4HANA upgrades faster, cheaper, and less risky.

Our Offerings

NAV IT supports your entire journey from the "Why" to the "How." Starting from assessing your current situation and requirement to enabling your teams to adopt the new change we are there for you through it all

Assessment: We review your LE-TRA landscape and map it to S/4HANA TM, helping you choose the right license (Basic vs. Advanced) and deployment (Embedded vs. Sidecar).

Roadmap: We design a transition plan that minimizes risk, aligning with your 2027/2030 deadlines.

Implementation: Our experts handle the full build, from "Basic Shipping" setups to complex multi-modal networks with SAP Business Network for Logistics (BN4L) integration.

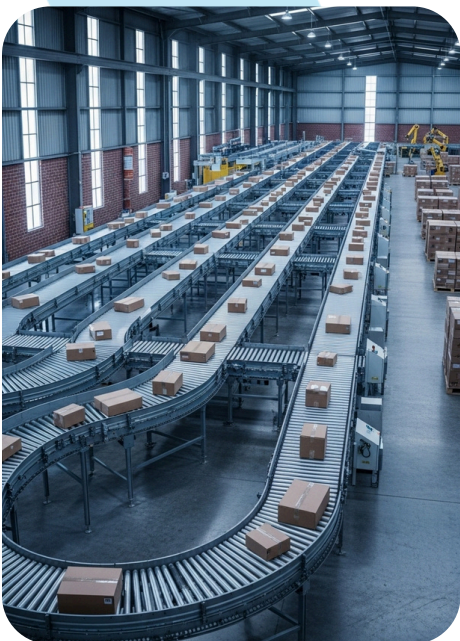
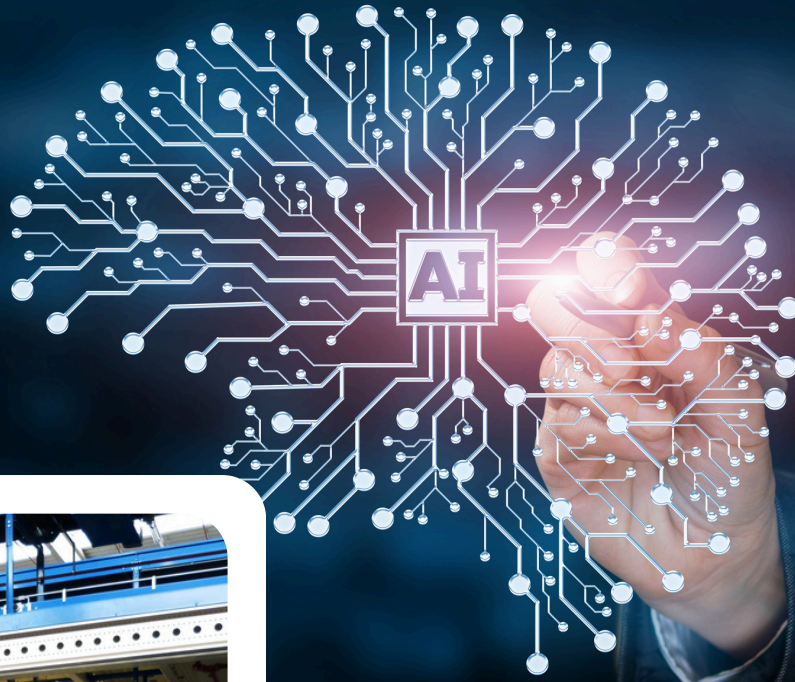
Support: Post-go-live Hypercare and continuous improvement services.



Change management:

Our change management is embedded at each step of the project. We work with your team to understand and identify resisters and champions early. We know if the change comes from the team, adoption is quicker and smoother. Cause for us one size doesn't fit all, we do not believe in general user manuals to guide through the transition. Our communication and guidance is role specific, for user to relate with the training.

Our ATTAIN methodology is a proprietary project framework blending Agile, Waterfall, and Activate approaches for efficient SAP implementations, structured across six phases: Identify, Prepare, Explore, Realize, Deploy, and Run



About Us

NAV IT is a boutique consulting firm with presence in Europe and Asia, specializing in intelligent supply chain and procurement transformation.

We design, implement, and optimize SAP led ecosystems; with deep process expertise, strong technical capability, and NAV IT's patented AI-Solutions and hyper automation skill to deliver scalable, future-ready business outcomes with tangible ROI.